



# EDUCATION

Burma Thailand Myanmar

## NOVEMBER 2023 REPORT



The **RISE Center** campus in Mae Sot, Thailand opened on October 15, 2023.

This good news comes in the wake of nothing but bad news throughout Burma. We tailor our programs primarily to young freedom-fighters in Burma escaping across the Thai border. We also serve the larger Burmese community in Mae Sot, families living in constant stress with inherited trauma from Burma and new trauma from the dangers and uncertainties of Mae Sot.

Our goal is to help cure trauma and aid the patients and their families (parents and children) in building the resiliency they need to function in these most trying of times, now in Mae Sot, later in Burma.

### RISE Center provides

- Individualized clinical treatment from a psychologist-led trauma team in a secure and comforting location.
- Mental health awareness and psycho-social support to overcome the stigma attached to mental health issues.
- Capacity building with our network of community leaders who know and can reach out to those in need and direct them to **RISE**.
- Workshops, Webinars, Counseling, Treatments such as cognitive processing (talk therapy), written exposure therapy (facing the traumatic event), EMDR (Eye Movement Desensitization & Reprocessing) (replacing the negative with the positive).



### MAE SOT - WILD WEST BORDER TOWN

POPULATION: 130,000 BURMESE 80,000  
BURMESE, CHINESE, ETHNIC BURMESE BORDER TRIBES

*This trading-route border crossing sees everything: drugs, human trafficking, garment sweat shops, Burmese junta-controlled jade markets, cheap Burmese migrant labor, young Peoples Defence Force Burmese fighters escaping the military junta's overwhelmingly superior forces, China seeking routes to Middle Eastern oil. Corruption and exploitation abound. We operate in this complex and difficult environment, but the RISE Center is located in a peaceful and uncrowded area slightly removed from the town center.*





## BEAM School graduate and shining star Naw Nu Nu Wah's story:

"In 2013 I had to move to Thailand due to a civil war in the Karen state. In Myanmar I did not have many chances to study. However, there were some educational opportunities in Mae Sot on the border with Thailand and Myanmar, so our family settled there.

I attended various migrant learning centers in Mae Sot from grade 7 until grade 12. After this I completed the GED program with **BEAM School**. It changed my life completely. I was able to apply for university!"

Naw Nu Nu Wah graduated from Chiang Mai University. She has a passion to give back to her community and help vulnerable populations in Myanmar.

### Education and Health Care in Burma

The junta has dismantled most institutions in Burma, none with more disastrous effects than Education and Health Care.

### Education Revolution

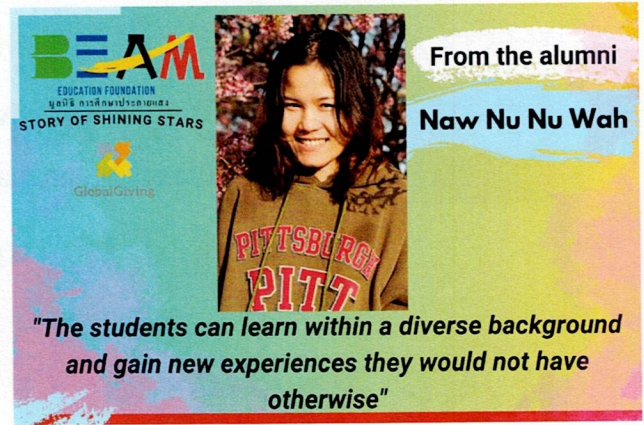
Our Education Revolution continues its clandestine activities in eastern Burma near the Thai border. Digital and in-person training in the



jungle is difficult and dangerous, especially for teachers who left the government schools as a part of the Civil Disobedience Movement.

### Conclusion

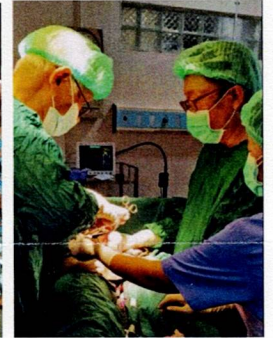
Given the disaster that is Burma, it is often difficult, even with the hope for the **RISE Center**, to keep our EBTM spirits up. For our Burmese team, the struggle is existential. They are in a revolutionary fight for freedom. They will not go back to military control. Failure is not an option. If we teach resiliency to the Burmese at **RISE**, we must also be resilient at **EBTM**. The **RISE Center** in Mae Sot provides hope – so does the generous support you have shown for so long. Thank you.



**BEAM Education Foundation**, our partner in Chiang Mai, Thailand offers a wide range of educational and vocational programs in Thailand and Burma. They will partner with the **RISE** team in Mae Sot by providing tools to build resiliency for our trauma patients and their families, including mental health awareness information for children.

### Health Care

Our doctor partner and his team continue to amaze us. Thousands from all over Burma make the long and dangerous trips to his clinic. The wealthy can find care that is convenient. For the poor, the very few and distant clinics like ours are the only option.



Sincerely,

Bill Harrison, President

**EDUCATION BURMA THAILAND  
MYANMAR (EBTM)**